



2N[®]

BRI gateways



2N[®] BRI Lite/Enterprise & Alcatel OXO version 7.7.1

connected via ISDN trunk

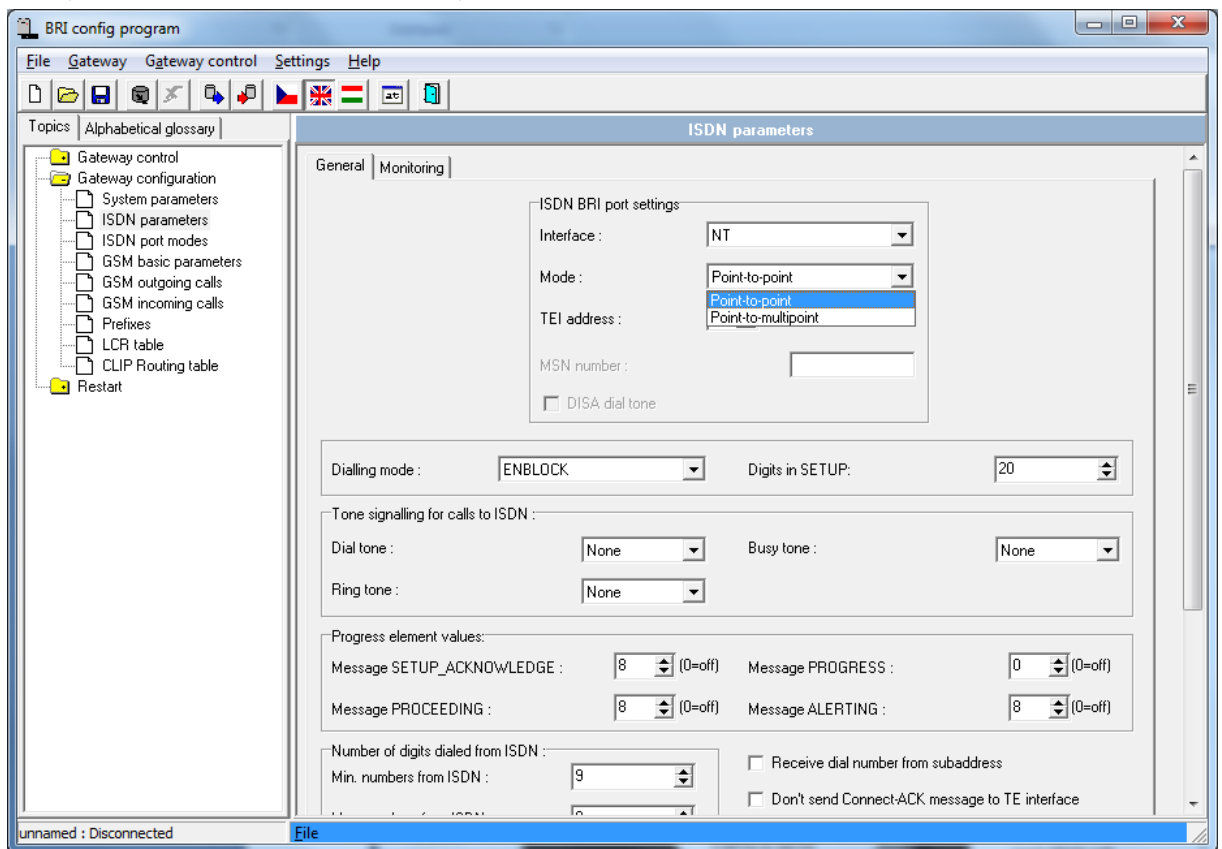
Quick guide

Version 1.00

www.2n.cz

ISDN TRUNK INTERCONNECTION

- 1) Set BRI gateway as **NT** device. Then set the mode. If you are using DDI, then set **PTP** (Point to Point). If you are using MSN numbers, then set **PtMP** (Point to multipoint). If you don't know, which mode should be selected, in 95% cases is correct Point to Point.

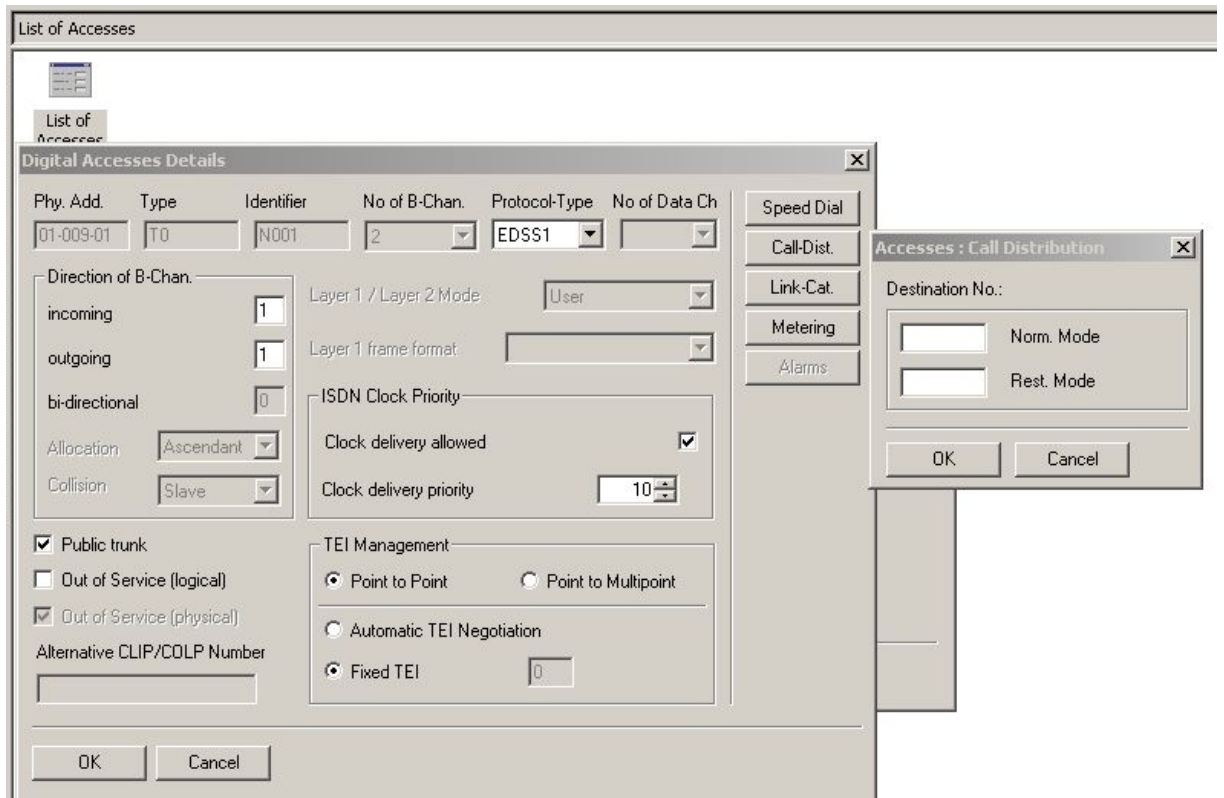


- 2) (Optional) To avoid synchronization issue is recommended to use BRI Enterprise and connect second ISDN port of gateway to **UA** (Universal Alcatel) via **SO Adapter EU**. Then assign to the UA some extension number to provide clock to the gateway and set TE Mode to **External Sync** in gateway's ISDN Parameters.

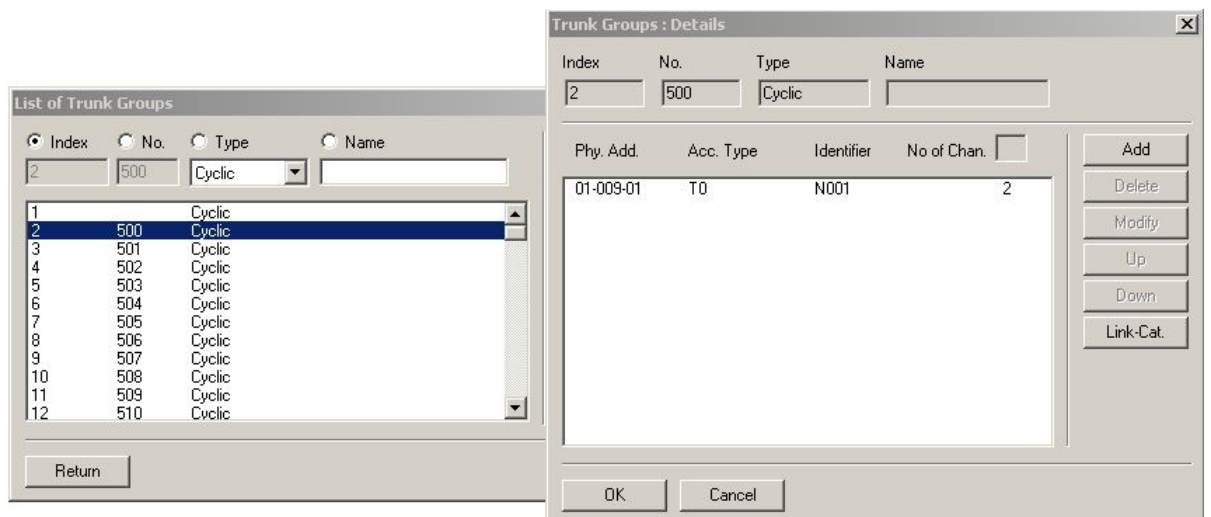
Next pages are describing Alcatel OXO 7.7.1 settings...

3) Create a new DSS1 trunk at **External Lines** → **List Of Acceses**

Choose DSS1 Protocol type and setup the number of channels



At list **External Lines** → **List Of Trunk Groups** menu assign the trunk to trunk group



Create a numbering plan at menu **Numbering → Numbering Plans**

Function	Start	End	Base	NMT	Priv	Fax
Main Trunk Group	0	0	ARS	Drop	No	
Protect Communication	*84	*84		Drop	No	
Lock/Unlock	*85	*85		Drop	No	
Programming Mode	*87	*87		Drop	No	
Account Code New	*99	*99		Drop	No	
Main Trunk Group	0	0	ARS	Drop	No	
Subscriber	110	199	110	Drop	No	
Subscriber	200	299	200	Drop	No	
Subscriber	300	399	300	Drop	No	
Secondary Trunk Group	500	534	1	Drop	No	
Hunting Group	540	565	540	Drop	No	
ACD Prefix	80	81	0	Drop	No	
Attendant Call	9	9	9	Drop	No	

Setup Least Cost Routing table at menu **Numbering → Automatic Routing Selection → Automatic Routing: Prefixes**

Act...	Network	Pr...	Ranges	Sub...	TrGpList	Called(15vPN/H450)	User comment	Metering	Calling	Called/PP	Destinatic
Yes	pub		6-7		1	het	GSM	Blank	def...	default	Not IP
Yes					2	het	ISDN	Blank	def...	default	Not IP
Yes	pub				2	het	ISDN	Blank	def...	default	Not IP

At menu **Numbering → Automatic Routing Selection → Trunk Groups Lists** assign index with trunk group

List ID	Index	No.	Char	Pro...	Access...	Auth.Code ID	Tone/Pause
1	2	500	G	None		None	None



2N TELEKOMUNIKACE a.s.

Modřanská 621, 143 01 Praha 4
 tel.: 261 301 111, fax: 261 301 999,
 e-mail: sales@2n.cz
 www.2n.cz