

# 2N® Easy Gate Baby call

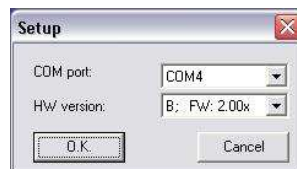
At first it is necessary to connect to Easy Gate device by Easy Gate PC Manager.

Follow these steps:

- At first launch Easy Gate PC Manager
- Click to the wheel icon



- Choose the correct port (you can verify it in Windows – device manager) and click to OK.



- Then click to Tel. line



- Then click to icon Tel. line and to the red label fill the telephone number to which will be automatically called after the telephone is picked up. Baby Call timeout means the time how long Easy Gate wait for pressing any digits. If you do no vote any number in that time, Easy Gate will call to the number which is written in the Baby Call number.

The image shows a software window titled "FXS interface" with a close button in the top right corner. The window is divided into several sections for configuring telephony parameters:

- Dialing parameters:** Includes "Type of dialing" (set to DTMF), "Time to dial [s]" (5), "Minimal On Hook [ms]" (500), "DTMF during call" (Analogue), and a checked "Beep after dialing end".
- Signaling:** Includes a checkbox for "Line reversal indication for call in progress" (unchecked), "Tariff pulse when call starts/ends" (None), and "Tariff pulse frequency" (16 kHz).
- FAX parameters:** Includes "FAX report" (OFF).
- Tone settings:** Divided into "Dial tone" and "Busy tone". Both sections have a "Double frequency tone" checkbox (unchecked), "Frequency 1 [Hz]" (425), "Frequency 2 [Hz]" (425), and "Cadence" (Continuous).
- Volumes:** Includes "Transmit" and "Receive" volume sliders.
- Ring signal settings:** Includes "Ringing signal frequency" (50Hz), "Ringing signal cadence" (1000/4000 ms), "dtto. for DATA/FAX" (1000/4000 ms), "CLIP" (Disable), and "Replace character '+' v CLI by:".
- "BabyCall" - automatic call:** Includes "BabyCall number" and "BabyCall timeout [s]" (0).

At the bottom of the window are "O.K." and "Cancel" buttons.